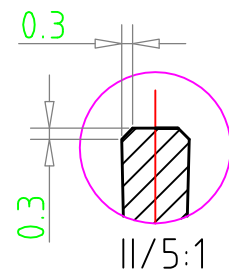
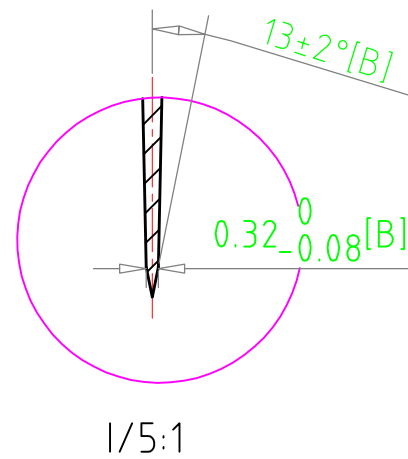
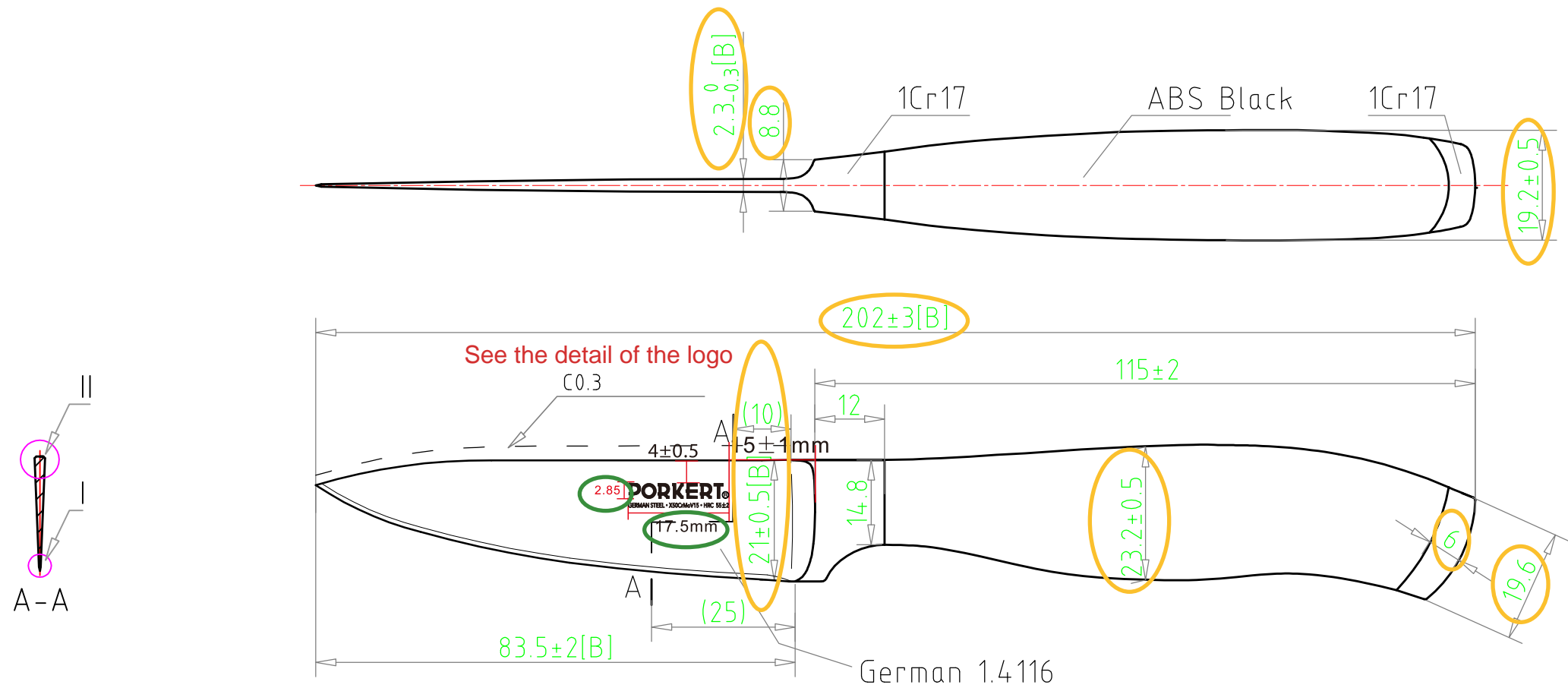


- Critical
- Major
- Minor



The line of the logo (etching technology) must be uniform.
The logo must be correct as follows:



Tolerance unless
otherwise specified
0-3mm ± 0.5
>3-30mm ± 1
>30-120mm ± 1.5
>120mm ± 3

4 critical

The part of knife		Material		Product identification	
Blade	ISO 1.4116 - German Stainless steel; HRC 55±2; taper grinding, stone finishing		Drawing no.	TCP-020	
Bolster			Description	3.5"Paring Knife	
Rivet			Scale	1:1	
Handle			Date	12.09.2019	
Stains , chips, burrs, cracks and scratches are not allowed. Inspection will be with AQL Cr 0/Maj 2.5/ Min 4.0 level II, accord. ISO 2859-1					
The product is produced an tested according to the standard ISO 8442-5:2004					