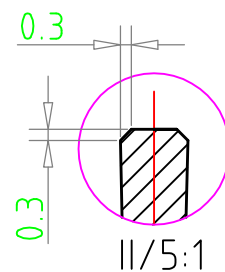
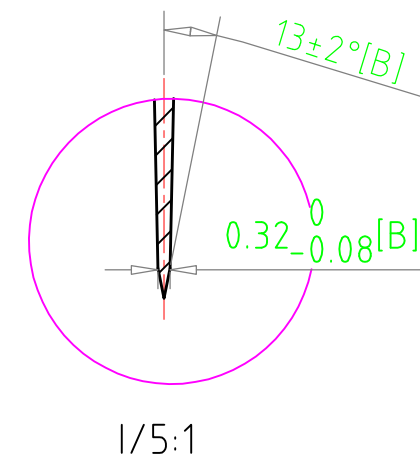
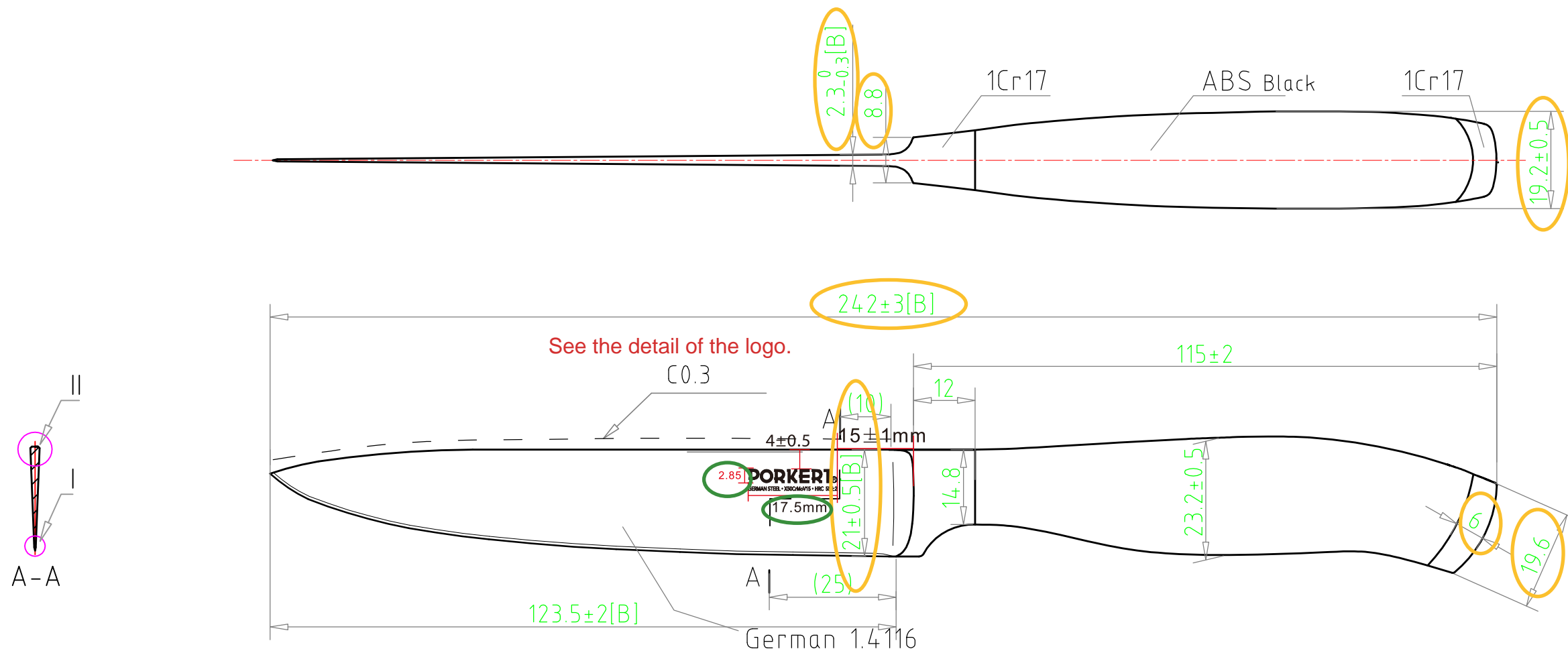


- Critical
- Major
- Minor



The line width of the logo (etching technology) must be uniform.
The logo must be correct as follows?



The part of knife	Material	Product identification	
Blade	ISO 1.4116 - German Stainless steel; HRC 55±2; Taper grinding, stone finishing	Drawing no.	TCP-015
Bolster		Description	5"Utility Knife
Rivet		Scale	1:1
Handle		Date	12.09.2019
Stains , chips, burrs, cracks and scratches are not allowed. Inspection will be with AQL Cr 0/Maj 2.5/ Min 4.0 level II, accord. ISO 2859-1			
The product is produced an tested according to the standard ISO 8442-5:2004			

4 critical

Tolerance unless
otherwise specified
0-3mm ±0.5
>3-30mm ±1
>30-120mm ±1.5
>120mm ±3