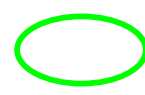
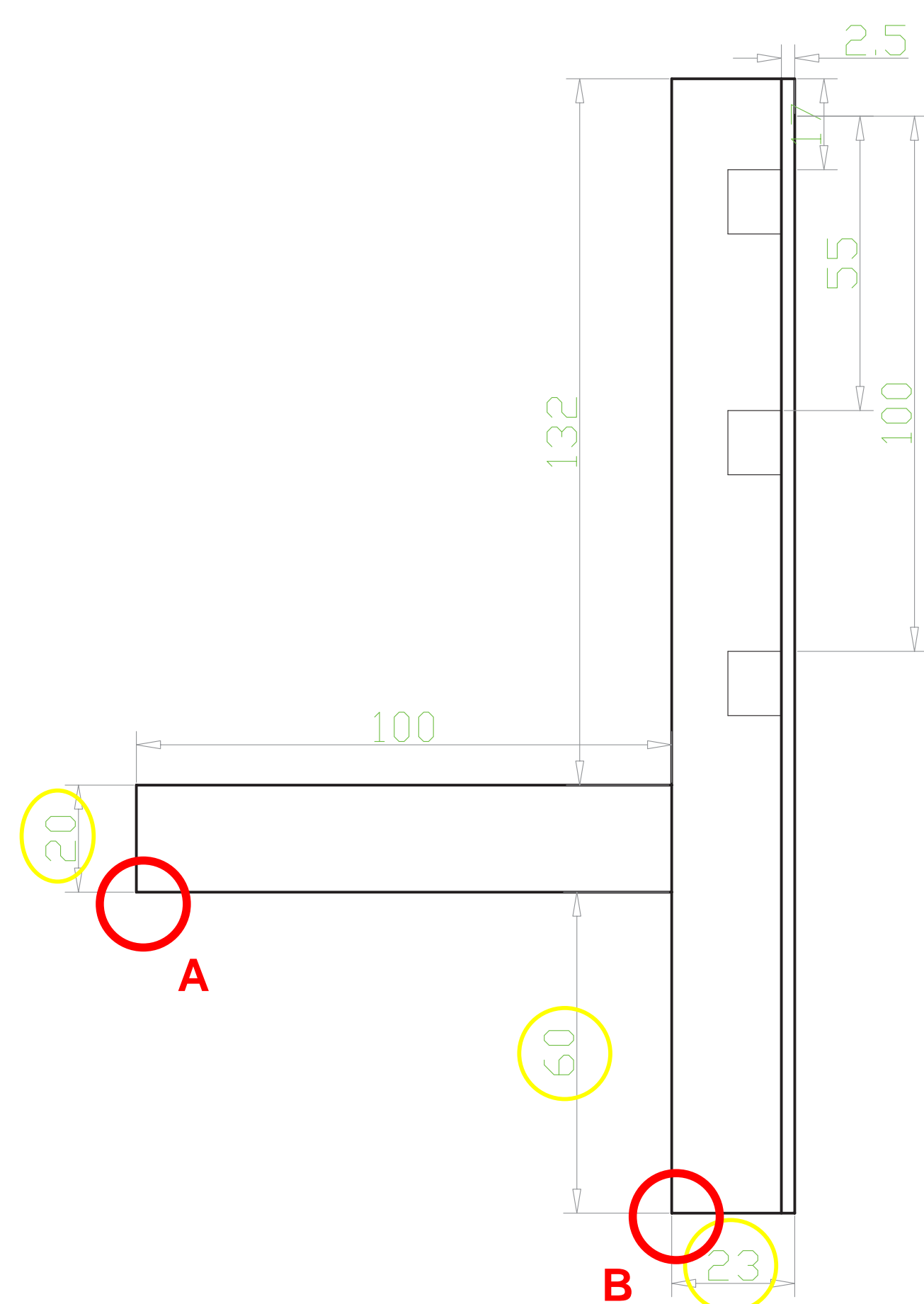




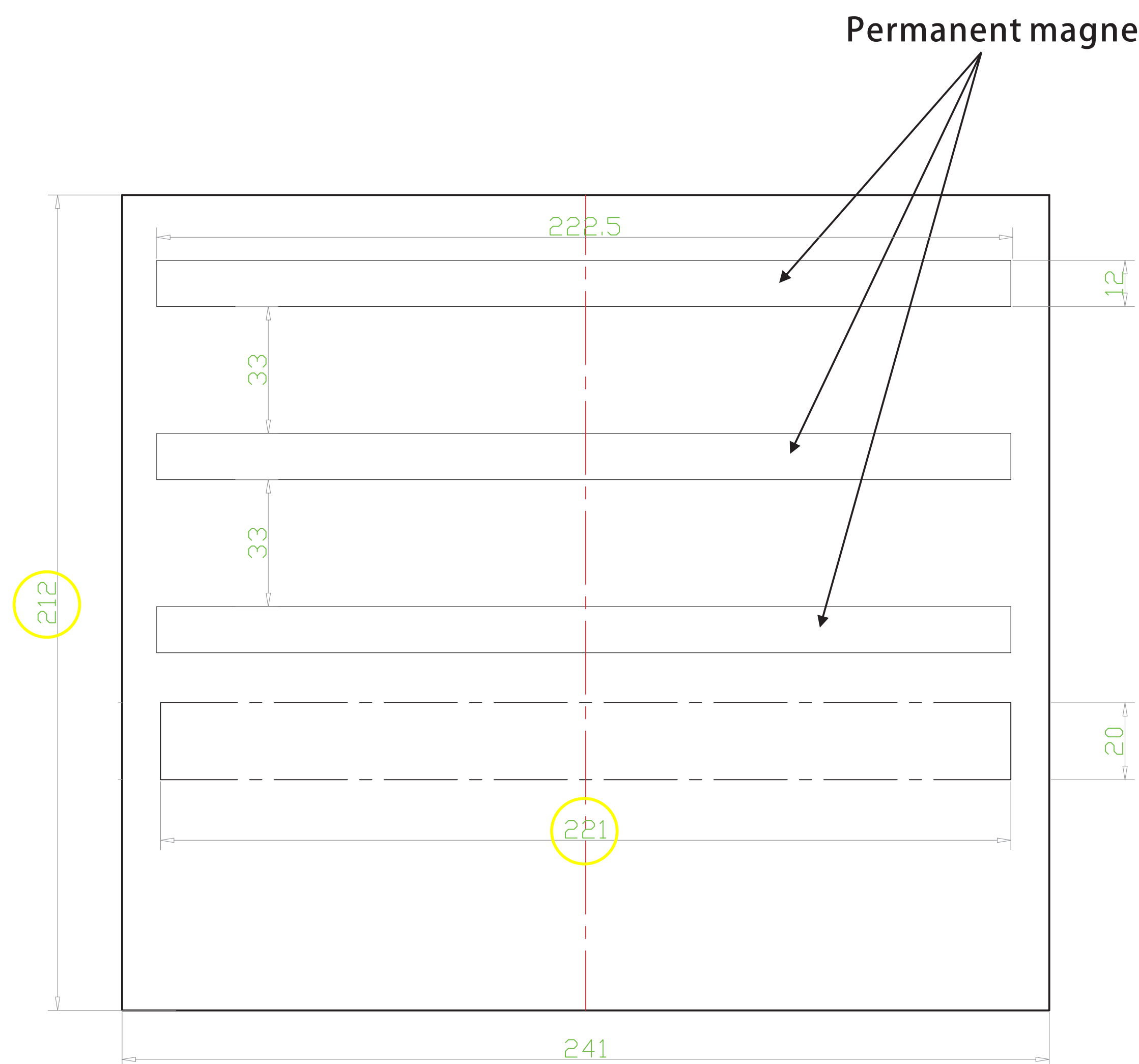
critical



minor

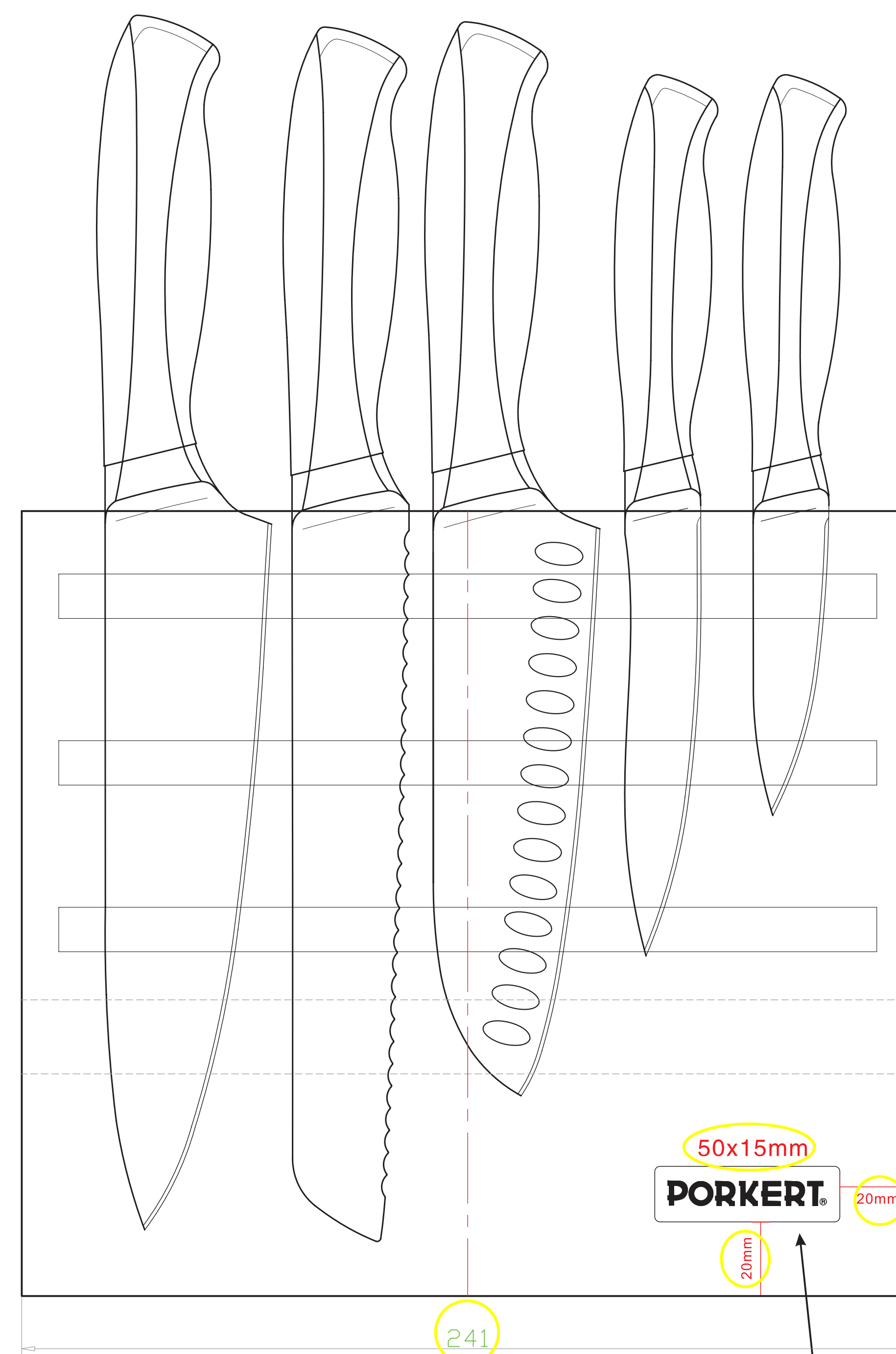


**The edges A and B must be parallel.
The magnetic knife block must not rock/wobble!**



Surface treatment: three layers of varnish treatment
Specification:
Nitrocellulose lackquer

Glue specification:
Vinyl Acetate emulsion (SY611S)



No visible residues of the glue on the surface allowed!
No visible residues of the varnish on the surface allowed!

Badge logo

The width of the logo must be uniform
Printing technology: Etching
The logo must be correct as follows:

PORKERT®

Other quality requirements and their control and checking are specified in the document Inspection standard for Block (part No. 7303 201)

Material	Product identification	
Bamboo wood one side magnetic block, nature color	Drawing no.	SL3032B
Logo	Description	Magnetic Knife Block
Badge logo	Scale	1:1
	Date	16.7.2019
Stains, chips, bumps, cracks, dents and scratches are not allowed. Inspection will be with AQL Cr 0.5Mq 1 / Min 2.5 level		

Tolerance unless otherwise specified
External dimension $\pm 2\text{mm}$